



LASER SOLUTION by GRAVOGRAPH

## ENGRAVING AND CUTTING LASER SOLUTIONS



### XY GANTRY LASERS

# LASER OUR KNOW-HOW

## INNOVATION

Gravograph constantly innovates. Our ability to anticipate market trends, and our dedication to satisfy our customers drive our strategy and product development. Our dedicated Center of Innovation and Technology sets the path to our future solutions.

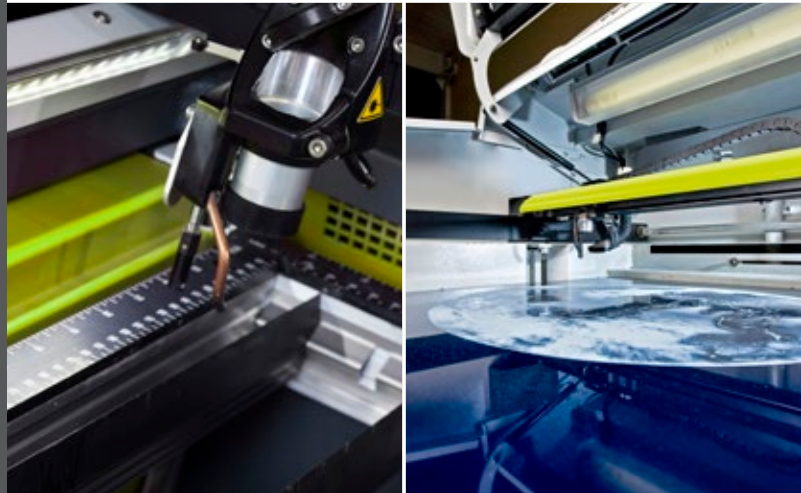
Easy-to-use, open, our laser equipment laser outrun standards around the world.

Our customer intimacy is the key to our expertise. From the freelance professional engraver to the largest international corporation, we understand their needs and satisfy them.

“

In our sector, a constant stream of new products and applications is indispensable for lasting success.

”



## A WORD ABOUT FUMES

Many industrial processes can generate harmful dust and fume. An operation where a material is cut, marked or engraved has the potential to produce harmful materials.

To ensure compliance with health and safety regulations, to protect employees' health, provide a better working environment and reduce downtime, we recommend you install the most appropriate extraction system.

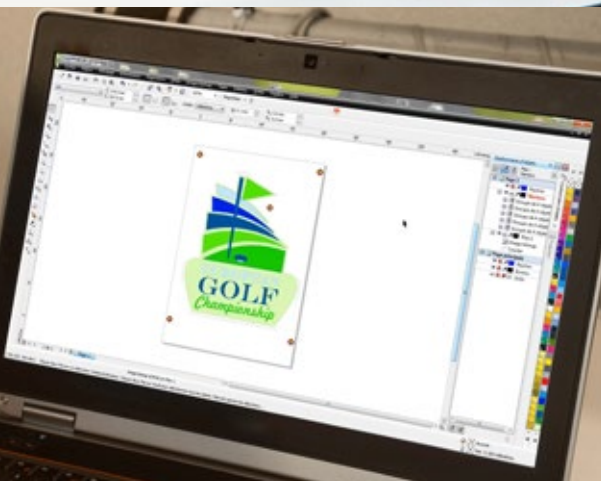
## EXPERT ADVICE

Investing in your future laser solution is not just luck. Here are a few crucial parameters you need to think ahead before you make your decision:

- Size and ventilation of your future laser's location is the first step in your decision-making
- Size and volume of the pieces you will be working on will answer many questions you will face for your solution
- Comfort and ergonomics of your solution will determine how much time you spend on it and eventually your ROI.



# PRODUCTIVITY GAINS START WITH GRAVOSTYLE



## A SPECIALIZED SOFTWARE FOR LASER

The software functions have been developed for full interaction with the design of our laser equipment. Laserstyle™ thus helps you maximise the potential of your Gravograph laser engraving machine.

### Focus on Print & Cut solution

Allow precision-cut printed shapes on rigid media thanks to UV-LED digital flatbed printing and your Gravograph solution.



## SIMPLIFY YOUR LASERING WITH PROFESSIONAL FEATURES

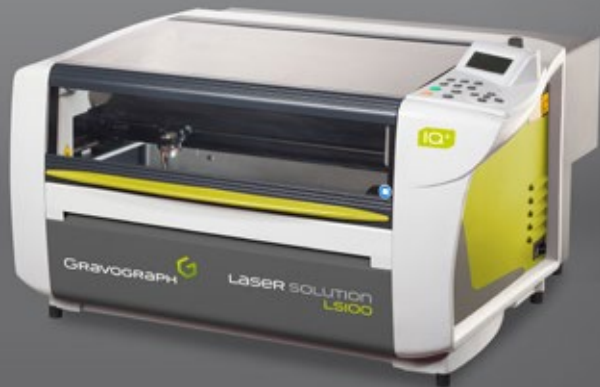
The powerful possibilities offered by the Matrix resolve the daily concerns of many customers. What's more, the wizard is simple to use and intuitive and it allows you to explore new possibilities.

Save time and quality during engraving thanks to our professional wizards. Plate creation is easy with our dedicated and intuitive assistant. Layout creation is simple, automatic and rapid for any flat engraving.

# LS100 - LS100EX

LS CO2 SERIES

Versatile engraving and cutting laser solutions



Laserstyle™ software included



Available in an Energy version



## COMPACT

The LS100 and LS100Ex will be at home in any environment, from retail outlets to industrial workshops. These compact desktop systems achieve a market leading footprint to working area ratio.



## VERSATILE

Plastics, wood, acrylic, metals, glass, leather... there is little that the LS100 range lasers cannot handle. A wide range of accessories is available and add to the machines' capabilities.



## PRODUCTIVE

The front loading system allows easy loading and positioning of parts inside a well-lit cabinet. The laser automatically detects the item height for accurate focusing. All lasering parameters are saved in a material library for increased productivity.



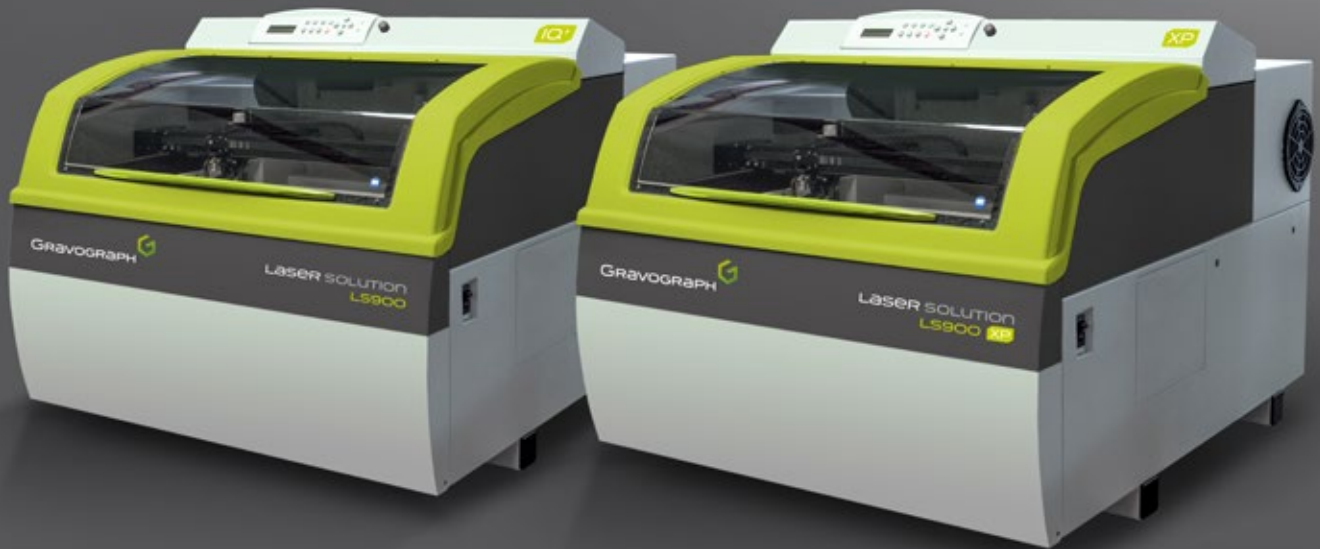
## INTEGRATED AIR COMPRESSOR

Keep the lens clean to ensure high quality engraving results. Protect the focal lens by pushing the fumes to the direction of exhaust area. Increase life span of lenses and participate to safe working conditions for the user.

# LS900 - LS900XP

LS C02 SERIES

Large format solutions for optimum productivity



Laserstyle™ software included

Available in an Energy version



## HEAVY DUTY

610x610mm lasering area, 250mm maximum item height and 25kg weight, full access to table with opening front and top doors, solid cast aluminium frame... the LS900 series has been designed for all applications and environments.



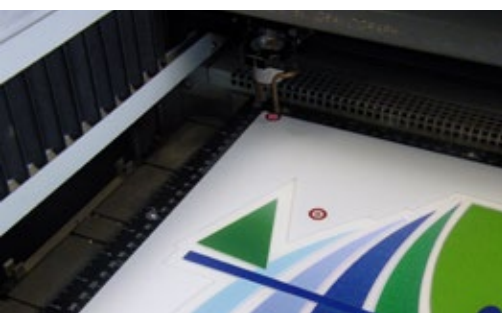
## ACCURATE

Engineered for productivity the LS900 series achieves lasering speeds up to 4000mm/s with with a 50µ (0.05mm) repeatability accuracy. The LS900 lasers are able to precisely laser characters down to 0.5mm height as well as highly detailed images.



## PRINT AND CUT COMPATIBLE

Also available on the LS100 and LS1000 series the Print&Cut solution makes cutting of printed media extremely simple, widening the LS900 range of applications at no extra cost.



## PRINT & CUT CAMERA (OPTION)

The high definition Print & Cut camera automatically detects the markers plotted around the print. The visual information is sent to the Gravostyle software which adjusts the cutting path.

# LS1000XP

LS CO2 SERIES

Powerful and heavy duty laser solutions



Laserstyle™ software included



## WORKING SPACE

Loading of a whole material sheet size 1220 x 610 mm is possible with the LS1000 Series. The Series allows vertical capacity of 300 mm for engraving of bulky objects, the production of rubber stamps and has cylindrical capability.



## MADE FOR CUTTING

Optimal productivity with engraving speeds of up to 4 meters/sec on a 1220 x 610 mm working area. CO2 laser sources ranging from 60 to 150W for precise engraving and large scale cutting applications.



## ERGONOMIC

The LS1000XP standard configuration includes a multitude of innovative functions aiming to reduce production times and increase usability: Front-Loading concept for total accessibility, Integrated cutting table with removable slats and material recovery tray, Modular engraving table, Double pass-through.



## PASS THROUGH

The double pass-through feature enables the lasering of items larger than the machine working area, with four opening panels located at the front, back and sides of the laser. Only available on the LS1000XP series.



# LS100EX - LS900

LS FIBRE SERIES

Flat bed fibre laser marking systems

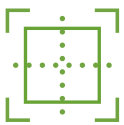


Laserstyle™ software included



## METAL MARKING

The LS100ex Fibre and LS900 Fibre machines are perfect solutions for direct engraving on a wide variety of metal parts and plates. This process dispenses with the need to apply a surface additive.



## WORKING SPACE

The LS100EX and L900 Fibre series presents an interesting alternative to traditional metal marking lasers by offering a large marking area up to 610 x 610mm. Large items or multiple small items can be lasered in a single operation.



## VERSATILE

The LS100EX and LS900 Fibre solutions engrave with enhanced contrast quality. A range of sources ranging from 20W to 50W allows for a wide range of metal marking and cutting applications as well as excellent engraving on some plastics.



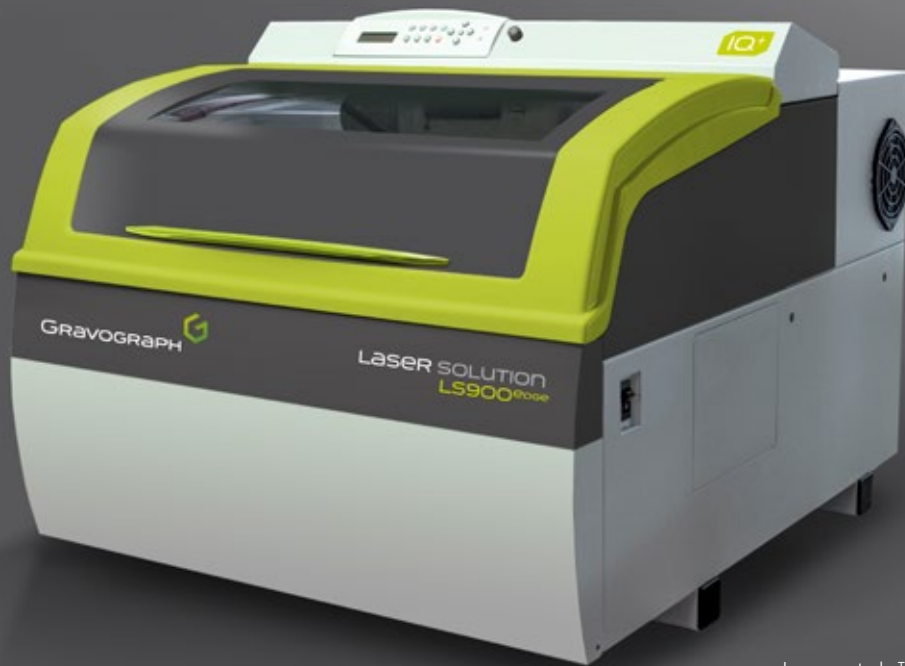
## CYLINDRICAL ATTACHMENT (OPTION)

Accurate engraving around cylindrical parts with perfect repeatability when several passes are required. Tiltable for conical shape cylinders. Exceptional results on glass.

# LS900 EDGE

FIBRE/CO2 LS SERIES

Hybrid fibre-CO2 laser solution



Laserstyle™ software included



## DUAL-SOURCE

The LS900 EDGE laser solution boosts your production capacities thanks to its two-in-one design. In fact, it incorporates a fibre laser source, for marking the hardest materials, and also a CO2 laser source for organic materials.



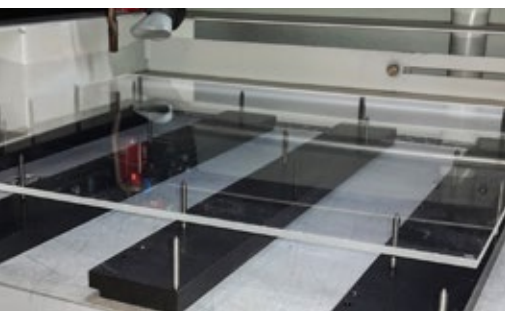
## USER-FRIENDLY

Adjust your laser settings easily thanks to the Laserstyle software (supplied as standard). Use the colour system to manage the use of both sources on one and the same workpiece. The LS900 EDGE is compatible with every one of the accessories in the range.



## HIGH PRODUCTIVITY

Maximise the profitability of your machine from its very first months of use! The numerous possible applications guarantee high production levels. Only start up the source required, and minimise wear in the other!



## FLOATING PIN TABLE (OPTION)

The floating pin table greatly improves cutting quality by eliminating 'back-flashes' created by heat being reflected from a support table and reduces the risk of flaming.



# EXHAUSTS

Our laser extraction and purification systems? Clean, pure, safe



## PRECISION

Without proper extraction, particles may build up between the laser and the engraved object. This may deflect the laser beam and impair engraving precision. Gravograph extraction systems keep your equipment dust free, maintaining precision levels and ensuring engraving excellence day after day.



## EASY TO MAINTAIN

Our extraction systems are designed to optimise access and facilitate maintenance operations. Gravograph exhausts are equipped with cleanable pre-filters, separate HEPA filter, refillable charcoal cartridges and brushless motors, are very cost effective systems to run.



## USER AND PLANET FRIENDLY

Every system in the range complies with international health & safety legislation and RoHS norms. All contaminants are secured in disposable filters. Only clean and pure air is pumped back into the workshop, ensuring premium user comfort.



## DESIGNED ESPECIALLY

Our systems provide extraction when marking, engraving and cutting noxious materials. A triple filtration system secures all particles in the filters for the ultimate in user comfort, safety and air purification.

# TECHNICAL CHARACTERISTICS

	CO2 TECHNOLOGY		
	LS100	LS100EX	LS900
Maximum engraving area (mm)	460 x 305	610 x 305	610 x 610
Max Z clearance (mm)	145		250
Laser wattage - air cooled (W)	40-60		40-60-80
Laser wattage - water cooled chiller as standard (W)	25 (Energy range)		
Standard features	Z motorised table - Front loading opening - Red dot pointer - Auto focus sensor - Print & cut media registration - Embedded laser control panel with LCD screen - Job complete alarm - Buffering memory - Jobs queuing - Automatic safety shut off.		
Positioning camera	×	×	option
Driver	Professional driver for graphic software included		
Software	Laserstyle™ graphic (Energy Range : Laserstyle™ discovery)		
Operating mode	Optimised Raster, High quality Raster, Vector, Cutting		
Max. speed (m/s)	2.5		
Size (mm)	755 x 725 x 450	1025 x 725 x 450	940 x 1065 x 815
Product weight (kg)	42	70	170
Laser classification	Class 1 - Laser product. Door closed		
Base stand	×	Option	
Vector cutting table - honeycomb grid	Option		
Floating pin table	Option		
Option cylindrical attachment	Ø 3 - 130 mm		Ø 3 - 200 mm
Integrated air exhaust in option	LE 120HP - LE140HP	LE150HP	Lni 900
Floor stand external exhaust in option	ES 10 - 30 - 50		
Alternate lenses	1.5 - 2"		1.5 - 2- 3 - 4"

MORE PRODUCTS  
INFORMATIONS



CO2 TECHNOLOGY		FIBRE TECHNOLOGY		DUAL-SOURCE TECHNOLOGY
LS900XP	LS1000XP	LS100EX FIBRE	LS900 FIBRE	LS900 edge
610 x 610	1220 x 610	610 x 305	610 x 610	
250	300	145	250	
40-60-80	60-80	20-30	20-30-50	20-30-50 (Fibre) - 40 (CO2)
×	100 - 150	×	×	

Z motorised table - Front loading opening - Red dot pointer - Auto focus sensor - Print & cut media registration - Embedded laser control panel with LCD screen - Job complete alarm - Buffering memory - Jobs queuing - Automatic safety shut off.

option	×	option
--------	---	--------

Professional driver for graphic software included

Laserstyle™ graphic

Optimised Raster, High quality Raster, Vector, Cutting

4.0		1.5		2.5 (CO2)
940 x 1065 x 815	1660 x 1160 x 800	1025 x 725 x 450	940 x 1065 x 815	
170	300	70	170	

Class 1 - Laser product. Door closed

Option	included as standard	Option
--------	----------------------	--------

Option

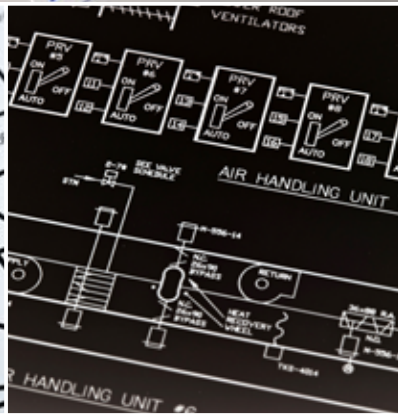
Option

Ø 3 - 200 mm		Ø 3 - 130 mm	Ø 3 - 200 mm
Lni 900	LE 190 HP	LE 140HP - 150HP	Lni 900
		ES 10 - 30 - 50	
1.5 - 2 - 3 - 4"	2 - 3 - 4"	2 - 3"	2 - 3 - 4"



# APPLICATIONS / MARKETS

SIGN &  
ENGRAVERS



INDUSTRY



MULTISERVICE  
STORES

MORE GRAVOGRAPH  
APPLICATIONS





Allow us to introduce you to the capabilities of Gravograph solutions, equipment, materials and accessories. Our creative and industry-specific solutions and equipment cater closely to the needs of our customers. Gravograph is driving innovation in engraving and marking solutions. Our customer intimacy, key axis of our mission, leads the path to constant enhancements and new discoveries. In everyday life, you can find products engraved with a Gravograph solution almost everywhere!



PERSONALISATION



TROPHIES & AWARDS



WINE & SPIRITS





# OUTSTANDING SERVICES

## CUSTOMIZATION & ADAPTATION

You want the best service? Gravograph is dedicated to its customers and offers customization and adaptation services.

Adapted or customized, our software can exchange data with any system or send informations directly to the machine. Wether it is holding systems, fixing mechanisms, we adapt the tools to your needs and objects. Specific developments, minor or major, are the ultimate solutions to have the perfect match your requirements.



## INSTALLATION & TRAINING

Enjoy the convenience of Gravograph's team to install and implement your solution and help you get the most of your equipment with appropriate training.

Users' needs and uses of the solution evolve over time. Our proximity allows us to always be present to accompany you and your business. Tailored maintenance contracts allow you to extend the reliability and life of your equipment. Software upgrades your machine's capabilities.



## EXPERT ADVICE

At Gravograph, we pride ourselves on providing our customers the best way to do what they intend on doing with their solutions. That means the most careful consideration of your applications and requirements.

Experienced teams across 5 continents take the time to set up parameters of your machine preceisley to best accomplish your goals. No matter what your objective is.

## QUALITY

The deployment of our quality policy allowed us to initiate an ISO 9001 certification process in 1999 and today our main industrial and commercial facilities are ISO 9001: 2015 certified.





# CONSUMABLES FOR LASER SYSTEMS



With thousands of colour combinations and the largest selection of laser engraving materials, Gravograph offers what you need, when you need it. You can also save time and money using our cut-to-size and fabrication services.

Use our fabrication services to get any metal or laminate cut to your exact requirements, whatever shape. Available finishes include bevelling, corner rounding, drilling, slotting or bending. Most materials can be supplied with a self-adhesive backing.

- Metal & plastic ranges for indoor & outdoor use
- Suitable for engraving & cutting applications
- Custom colours available
- Various thicknesses and sheet sizes available
- Custom fabrication to your specifications, on demand
- Expert advice available

		CO2	FIBRE
PLASTICS	Gravoply™ 2		●
	Acrylic	●	
	Flexilase™	●	
	Gravotac™	●	
	Gravoglas™ 1	●	
	Gravoply™ Laser	●	
	Gravoply™ Ultra	●	
	Gravolase™ Metallics	●	
	Metallex™	●	
	Stickalase™	●	
ALUMINIUM	Alumamark™	●	
	Gravoxal™	●	●
	Gravometal™	●	●
	Colored Aluminum	●	●
BRASS	Durablack™	●	●
	Trophy Brass	●	●
	Rubbalase™	●	
	Gravostrat™	●	

	CO2	FIBRE
Gold		●
Platinum		●
Silver		●
Glass, crystal	●	
Cork	●	
Horn	●	
Leather	●	
Paper, cardboard	●	
Fabrics, textile	●	
Fruit, food	●	
Wood, wood veneer	●	
Stone, marble, granite, ceramic	●	
Silicone	●	
Medical & electrical ceramics		●
Titanium, carbide, carbon		●
Fiberglass	●	
Nickel plated		●
Steel, stainless steel		●

FOR MORE INFORMATION,  
CHECK OUR E-CATALOGUE



# ABOUT GRAVOTECH

Gravotech is the global leader in cutting, engraving, scoring and permanent marking solutions for the personalization, signage and traceability sectors. The group has two main brands: Gravograph and Technifor. Gravotech is the reference supplier of laser and mechanical machines and materials for cutting, engraving and scoring operations. Technifor specialises in dot peen marking, scoring and permanent marking machines using lasers dedicated to traceability.

Gravotech's head office is in Lyon, France, and it operates three production sites and provides solutions via 21 subsidiaries and distributors in over 100 countries, employing 920 people worldwide.

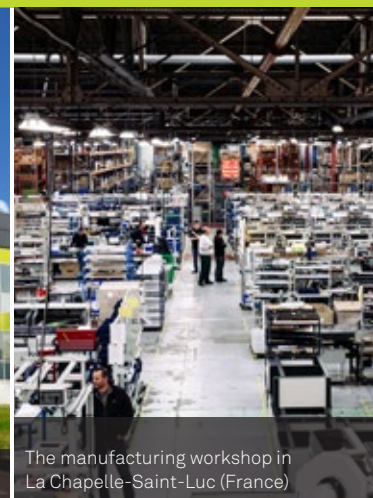
Additional information on the group, its products and services is available on our sites: [www.gravotech.com](http://www.gravotech.com), [www.gravograph.com](http://www.gravograph.com) and [www.technifor.com](http://www.technifor.com)

“ Providing quality, user-dedicated and productivity-driven solutions to our customers drives our development and teams everyday. ”

*G rard Guyard - Group chairman & CEO*



The head office in Rillieux-la-Pape



The manufacturing workshop in La Chapelle-Saint-Luc (France)



## CONTACT US

TEL : +44 01926 884 433 | FAX : +44 01926 883 879

[info@gravograph.co.uk](mailto:info@gravograph.co.uk)

[www.gravograph.co.uk](http://www.gravograph.co.uk)

**Gravograph Ltd**  
Unit 3, Trojan Business Centre  
Tachbrook Park Drive  
Leamington Spa  
CV34 6RS

**GRAVOGRAPH** 

GRAVOTECH GROUP

